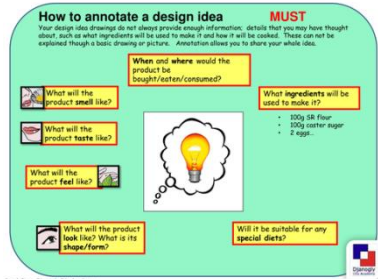


Annotate



Adding notes to a diagram to give information or to explain.

The children decided to **annotate** their design to make it clearer to follow.

Criteria



A set of standards that a product has or has not achieved

When we had finished our design it met the **criteria** we were looking for.

Fastenings



Something that joins two or more objects together.

We used zips and buttons as our **fastenings** in our design.

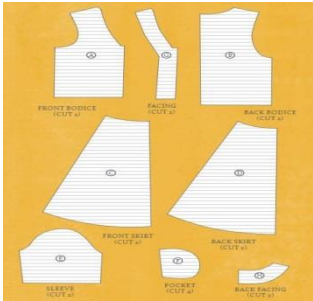
Hem



The edge of a piece of cloth which has been turned under and sewn.

When we make our advent calendar we will sew a **hem** on the edges.

Pattern Pieces



Templates of individual parts which will make the product when joined together

When we cut out our **pattern pieces** we need to do it very carefully.

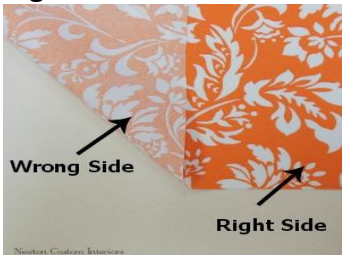
Reinforce



To strengthen or support something with extra material.

We use extra fabric to **reinforce** areas that need to be stronger.

Right side



The printed side or pretty surface of the fabric.

When we sew we need to make sure we do it on the **right side**.

Seam



A line where fabric is sewn together in a garment.

A plain **seam** is the most commonly used and can be used for most designs.